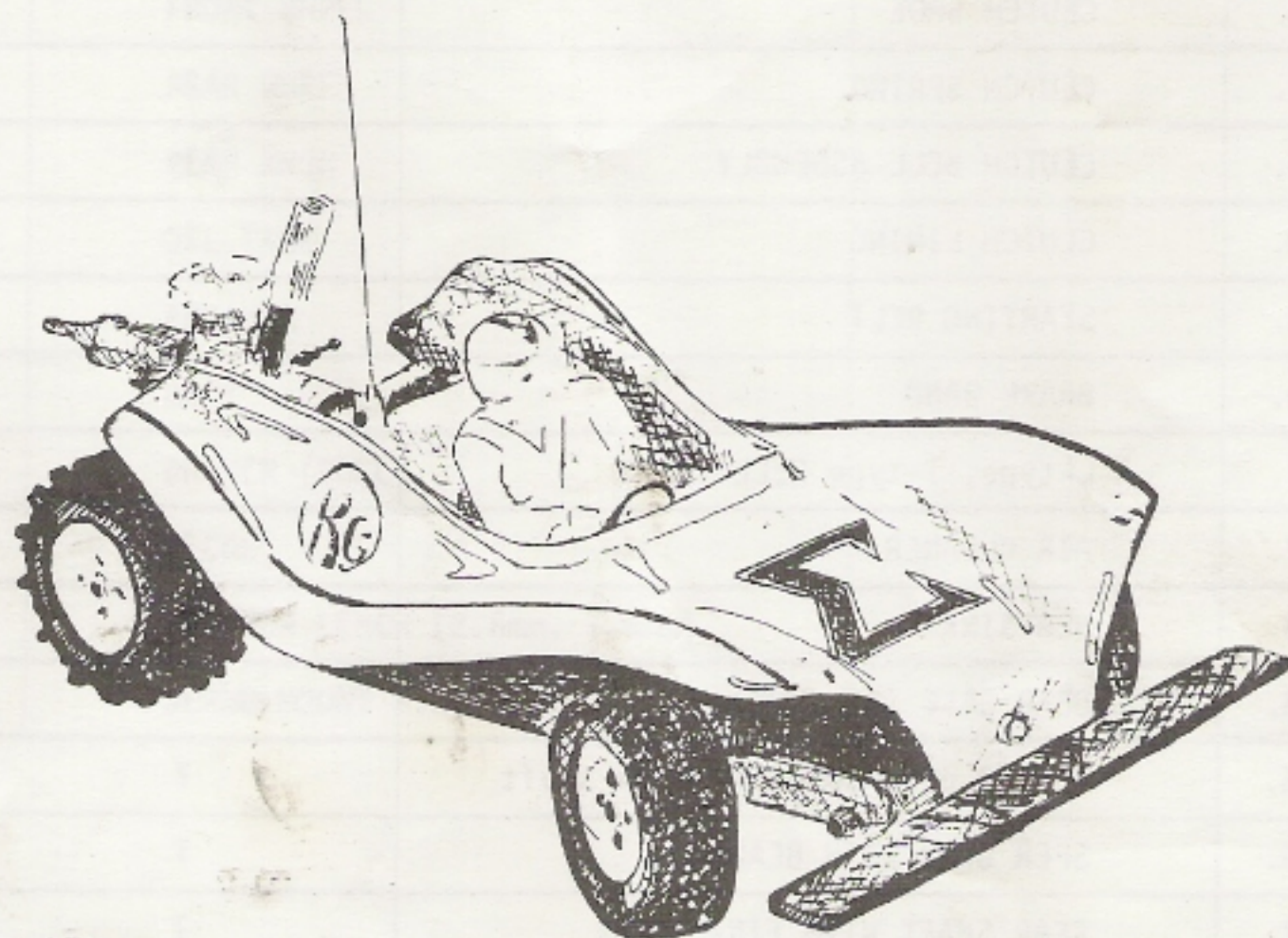


SIGUMA-ACE



TOTAL LENGTH (全長)	540mm
TOTAL WIDTH (全巾)	280mm
TOTAL HEIGHT (全高)	180mm
WHEEL BASE (ホイールベース)	295mm
TREAD (FRONT, REAR) (トレッド前・後共)	220mm
WEIGHT (重量)	2800g
RADIO CONTROL (RCメカ)	2 ch 2 SERVO
ENGINE (エンジン)	19~21

**RADIO
CONTROL
MODEL
BUGGY KIT**

Sankyo
OSAKA JAPAN

PARTS LIST

NO.	DESCRIPTION OF GOODS	ACTUAL USE (FOR ONE KIT)
1.	ENGINE MOUNT VISE	2 pcs.
2.	FLYWHEEL SPACER	1
3.	PILOT NUT (OS ENYA)	1
4.	PILOT BEARING	1
5.	CLUTCH SHOE	2
6.	CLUTCH SPRING	2
7.	CLUTCH BELL ASSEMBLY	1
8.	CLUTCH LINING	1
9.	STARTING BELT	1
10.	BRAKE BAND	1
11.	L-type, T-type BELL CRANK	1
12.	AIR CLEANER	1
13.	HEATSINK	1
14.	GEAR CASE (RH./LH.)	ea. 1
15.	Second gear assembly with shaft	1
16.	SPER GEAR WITH BEARING	1
17.	REAR SHAFT WITH FINAL GEAR	1
18.	HALF SHAFT	2
19.	JOINT PIN	4
20.	REAR ARM ASSEMBLY	2
21.	REAR ARM ROD	2
22.	SPRING FRONT (RH./LH.)	ea. 1
23.	SPRING STOPPER FRONT	4
24.	NYLON NUT 6mm FRONT	4
25.	ARM HEXAGON SHAFT	2
26.	FRONT ARM ASSEMBLY	2
27.	TIE ROD	1
28.	TIE ROD END	2

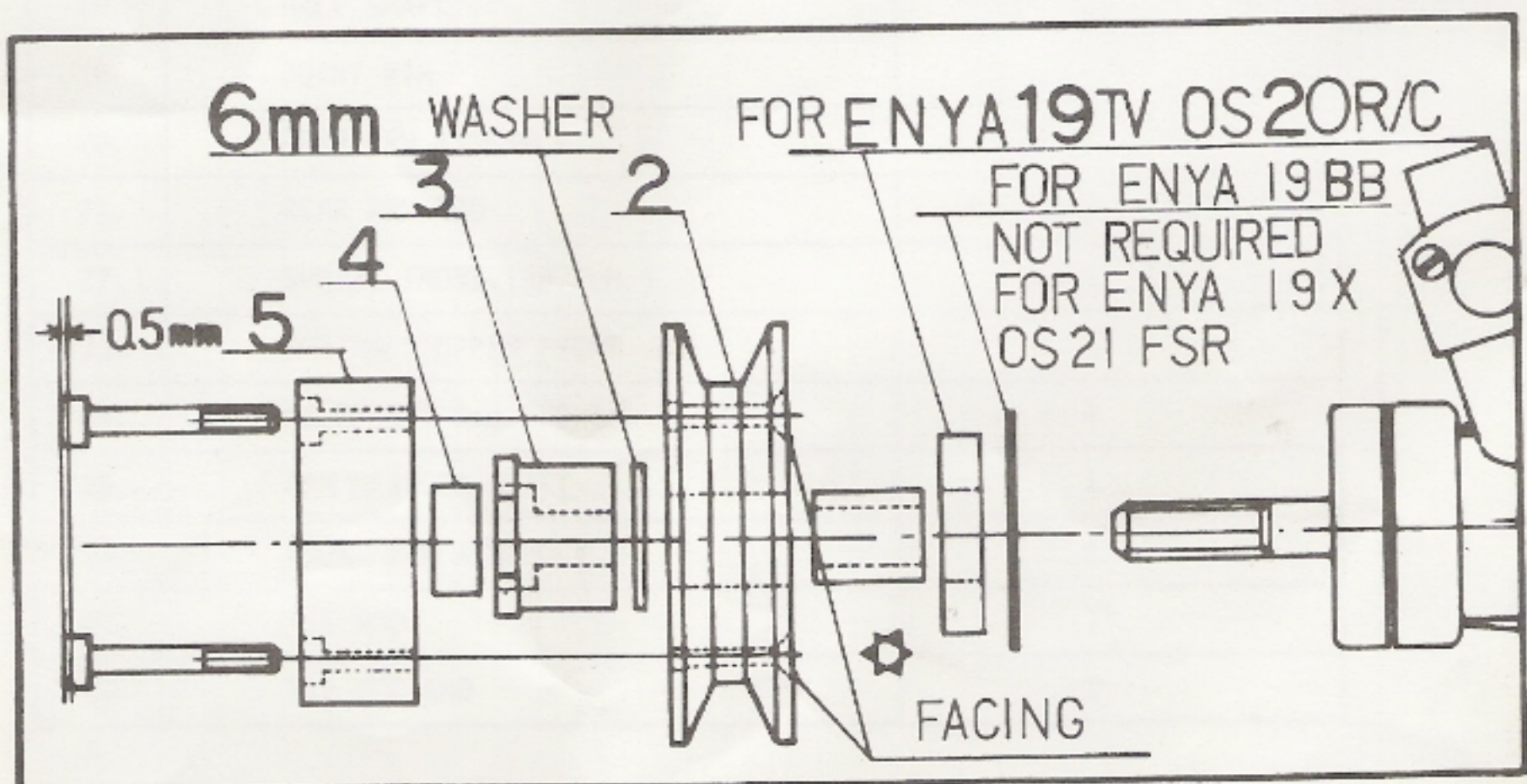
29.	SERVO SAVER	1 pc.
30.	SHASSIS	1
31.	FRONT BUMPER	1
32.	FRONT TIRE	2
33.	REAR TIRE	2
34.	FRONT WHEEL	2
35.	REAR WHEEL	2
36.	REAR KNOB	1
37.	OIL TANK	1
38.	ANTENNA	1
39.	BODY	1
40.	DRIVER (DOLL)	1
41.	DECAL	1
42.	GEXAGON LENCH (2.5mm, 1.5mm)	1
43.	SERVO MOUNT S.M. PLATE	1 pair

ENGINE

1. A SPACER, (2) A FLYWHEEL (MUST BE CHECKED WHETHER IT IS THE FRONT OR THE BACK), A WASHER OF 6MM Ø SHOULD BE FITTED AND FULLY TIGHTENED WITH A PILOT(3)

NOTE: NUTS, COLLARS AND SPACERS SUITABLE FOR EACH ENGINE SHOULD BE EMPLOYED.

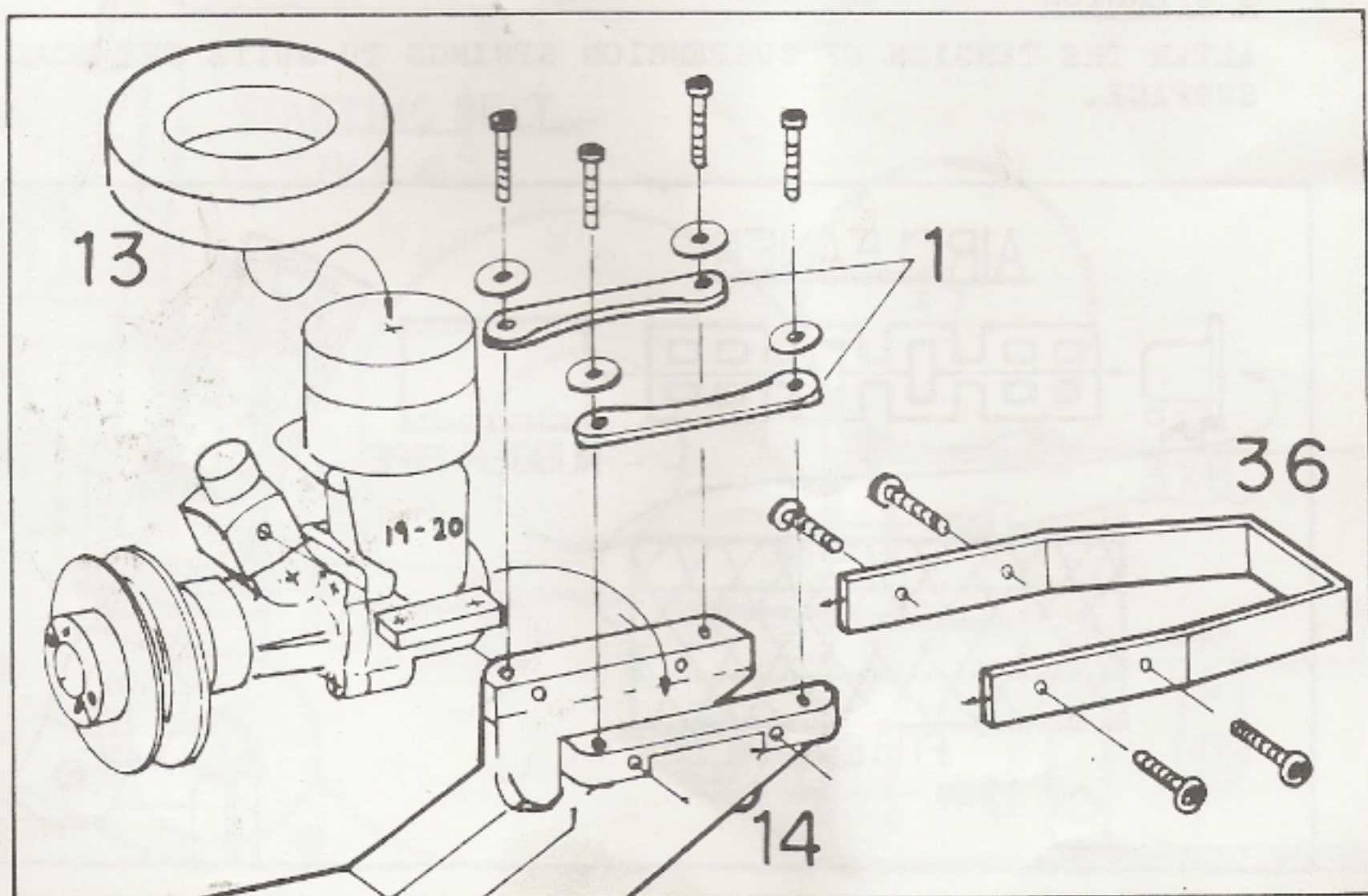
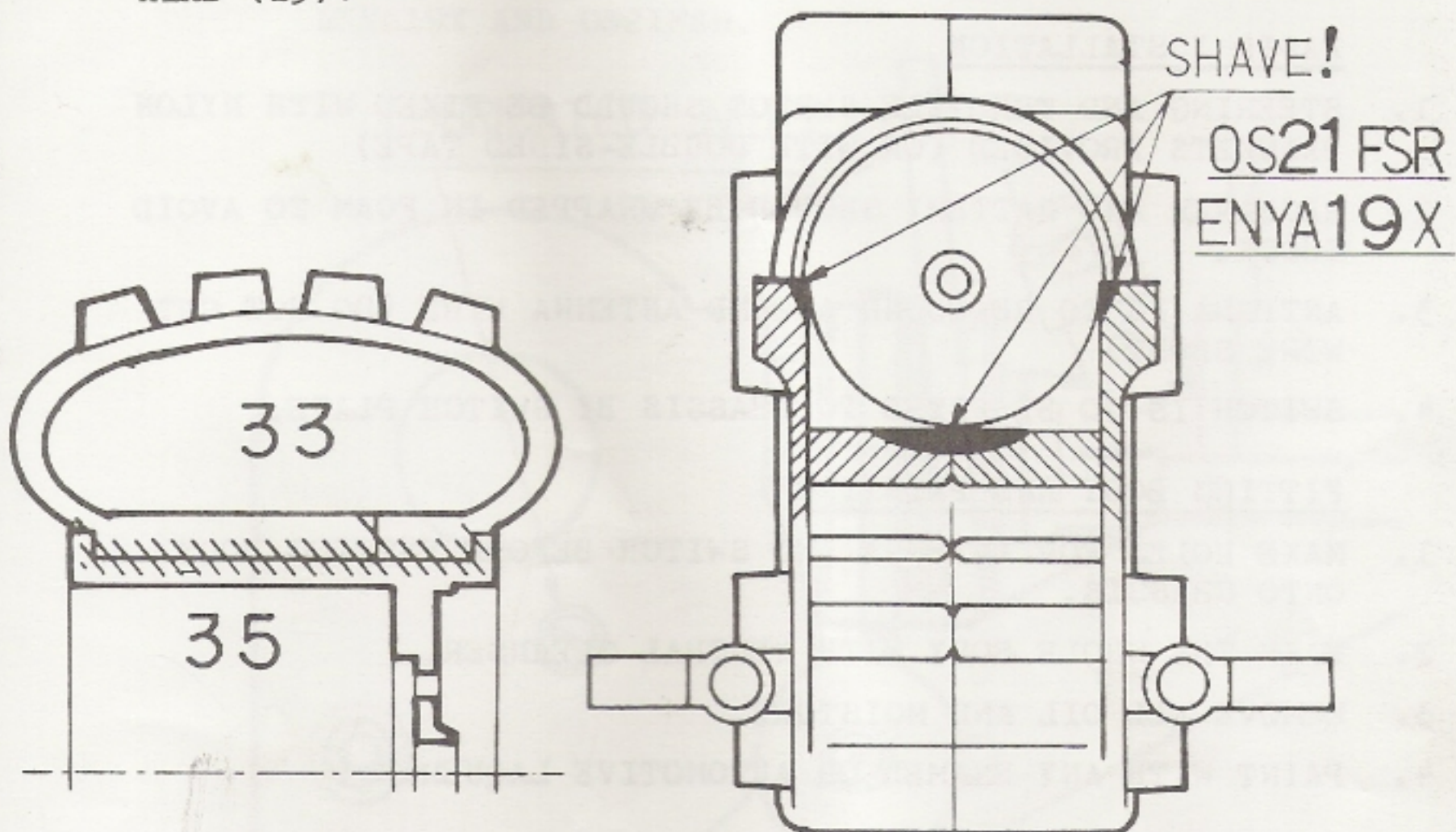
2. PUT SMALL PILOT BEARING (4) INTO FLYWHEEL NUT (3).
3. BOLT THE CLUTCH SHOE TO THE FLYWHEEL, MAKING SURE NOT TO OVER TIGHTEN BOLTS. CLUTCH SHOES MUST BE FREE TO EXPAND SMOOTHLY (WHEN ENGINE SPEED IS INCREASED)(5)
4. CLUTCH BOLTS SHOULD BE RETAINED WITH SOME SUPER GLUE.
5. THEN PLACE ENGINE ONTO ENGINE MOUNT AT REAR OF GEAR BOX AND CAREFULLY ALIGN SMALL BEARING (4) WITH SMALL DRIVE SHAFT PROTRUDING INSIDE FLYWHEEL CLUTCH HOUSING. MAKE SURE FLYWHEEL AND CLUTCH HOUSING ARE PARALLEL BEFORE BOLTING MOTOR INTO POSITION (PLACE STARTING BELT OVER FLYWHEEL).
6. PUT MUFFLER ONTO ENGINE AND USE MUFFLER PRESSURE TO ASSIST FUEL FLOW.
7. FIT THE REAR (36) AND FRONT (31) BUMPERS WITH SCREWS AND NUTS PROVIDED.



TYRES

WE SUGGEST YOU LOCK THE TYRES INTO THE WHEEL HUBS SO THAT DURING HARD CORNERING THE TYRES WILL NOT JUMP OFF. (33) AND (35).

HEATSINK SHOULD NOW BE CAREFULLY PUSHED OVER ENGINE HEAD (13).



CHASSIS AND GEAR CASE ASSEMBLY

FIX GEAR BOX AND CHASSIS TOGETHER WITH 4 BOLTS PROVIDED.

FUEL TANK

FIX FUEL TANK ACROSS CHASSIS WITH ALUMINIUM STRAP PROVIDED.

RADIO INSTALLATION

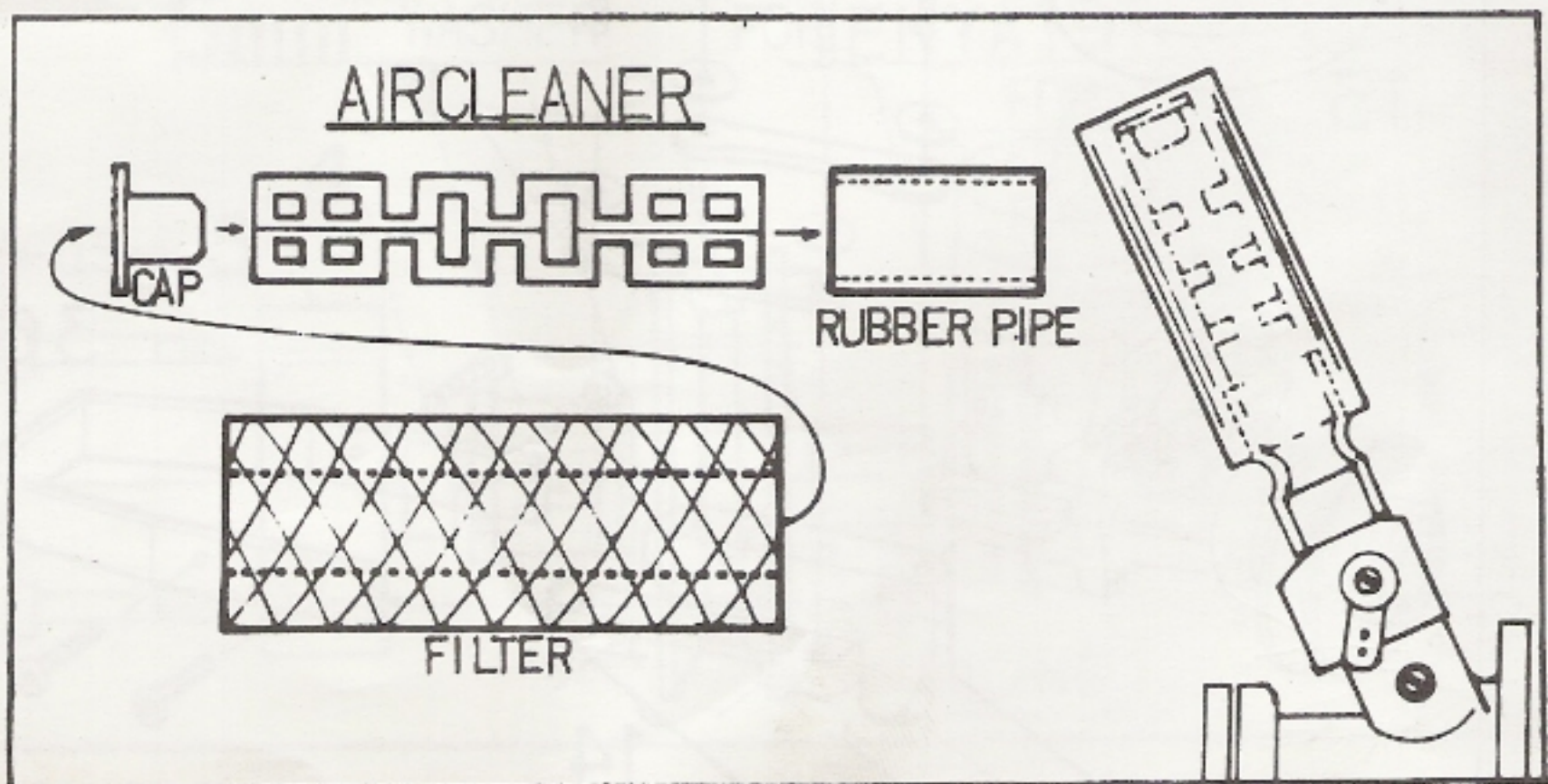
1. STEERING AND THROTTLE SERVOS SHOULD BE FIXED WITH NYLON BRACKETS PROVIDED (OR WITH DOUBLE-SIDED TAPE)
2. RECEIVER AND BATTERY SHOULD BE WRAPPED IN FOAM TO AVOID SHOCK.
3. ANTENNA IS TO BE WOUND AROUND ANTENNA WIRE (DO NOT CUT WIRE SHORT)
4. SWITCH IS TO BE FIXED TO CHASSIS BY SWITCH PLATE.

FITTING BODY AND PAINTING

1. MAKE HOLES FOR ANTENNA AND SWITCH BEFORE PUTTING BODY ONTO CHASSIS.
2. WASH THE WHOLE BODY WITH NEUTRAL CLEANSER.
3. REMOVE ALL OIL AND MOISTURE.
4. PAINT WITH ANY ENAMEL OR AUTOMOTIVE LAQUER.

SUSPENSION

ALTER THE TENSION OF SUSPENSION SPRINGS TO SUITE THE ROAD SURFACE.

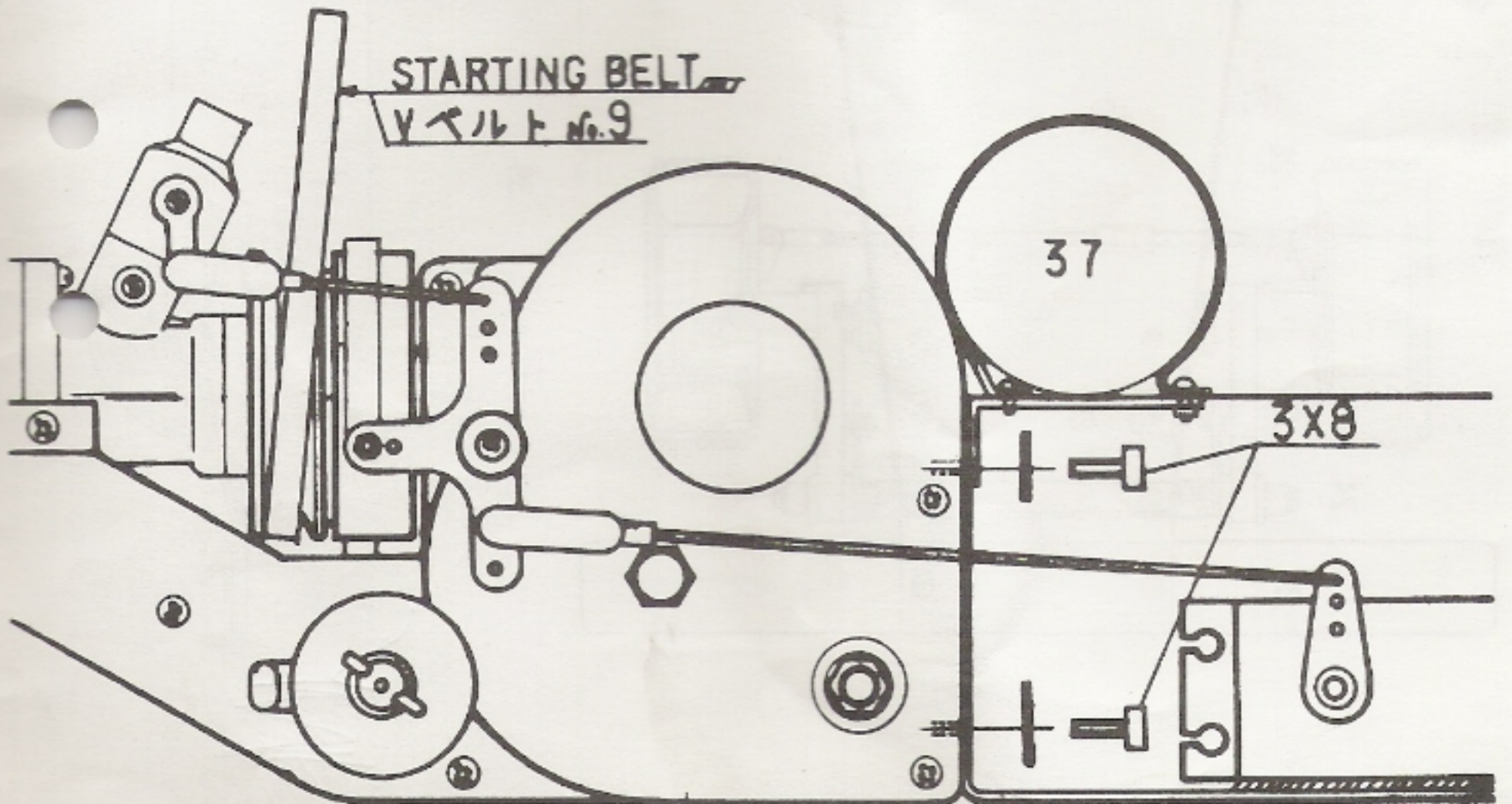
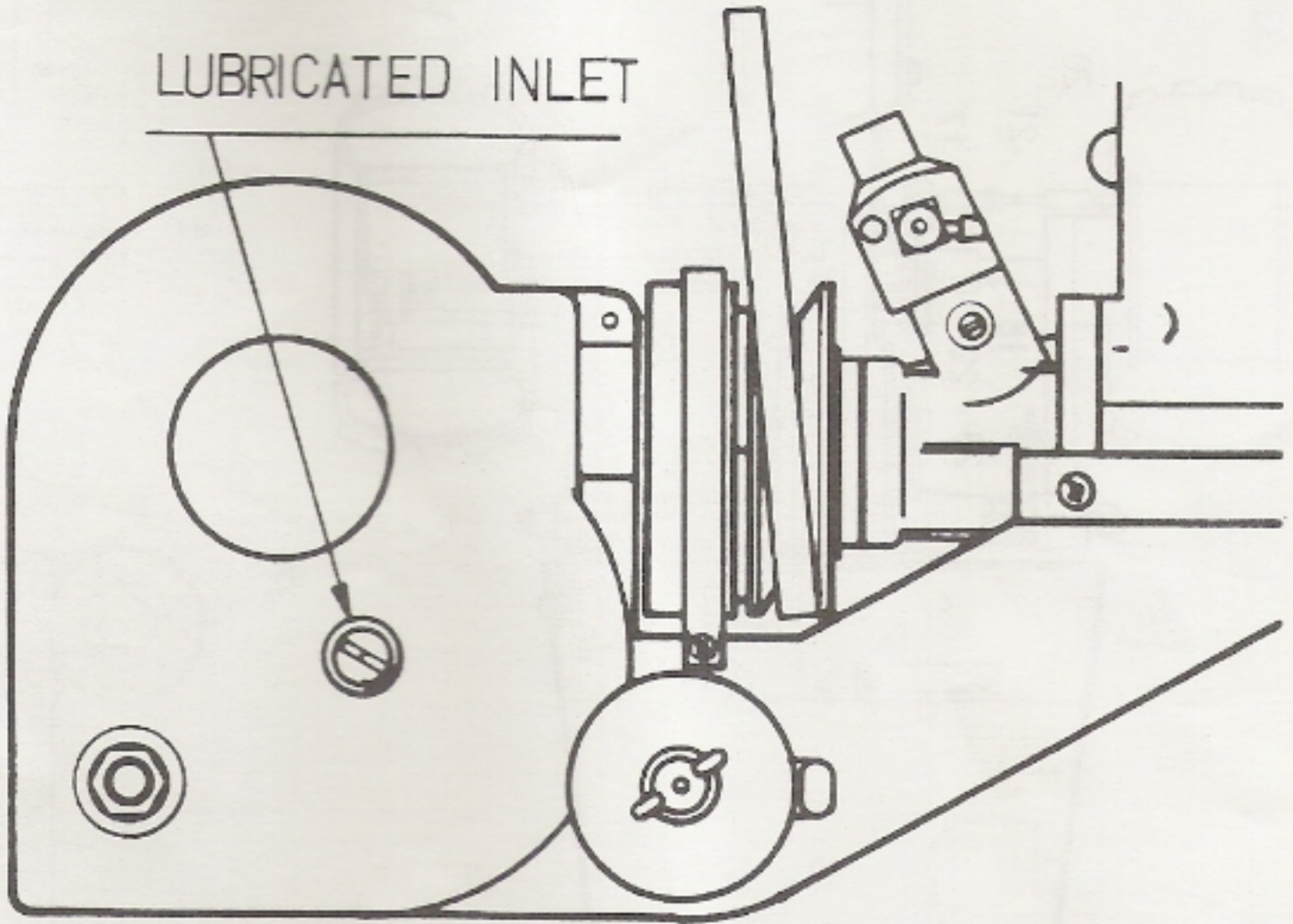


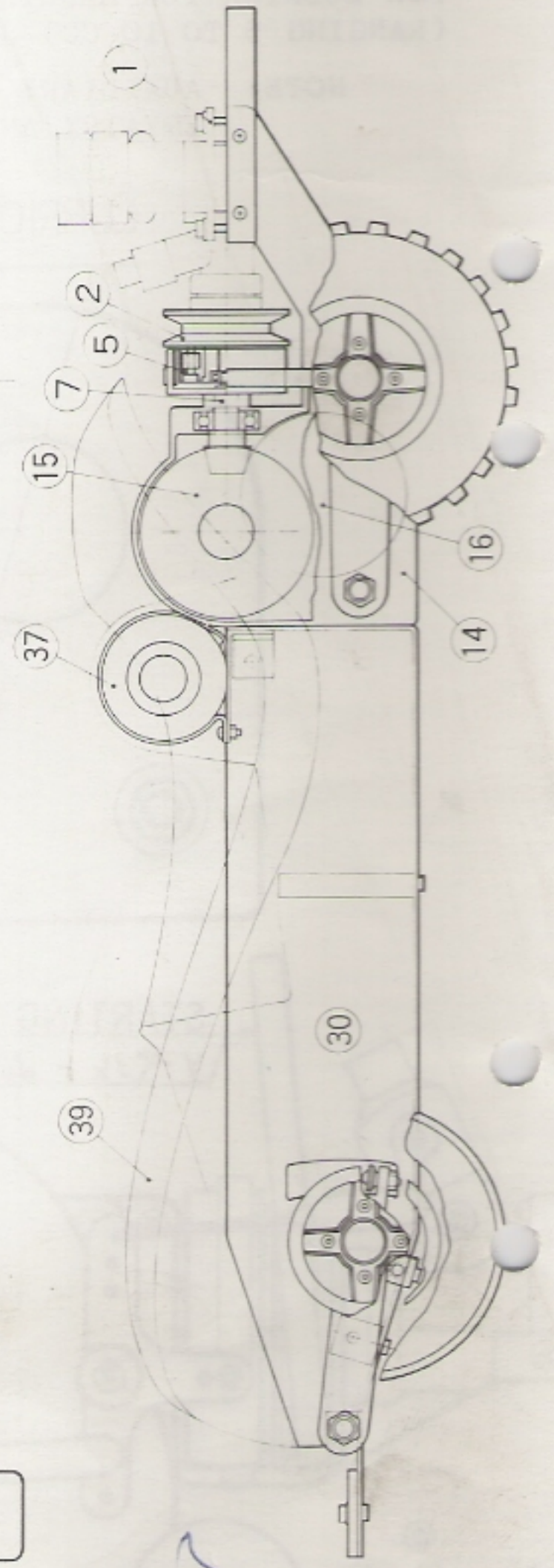
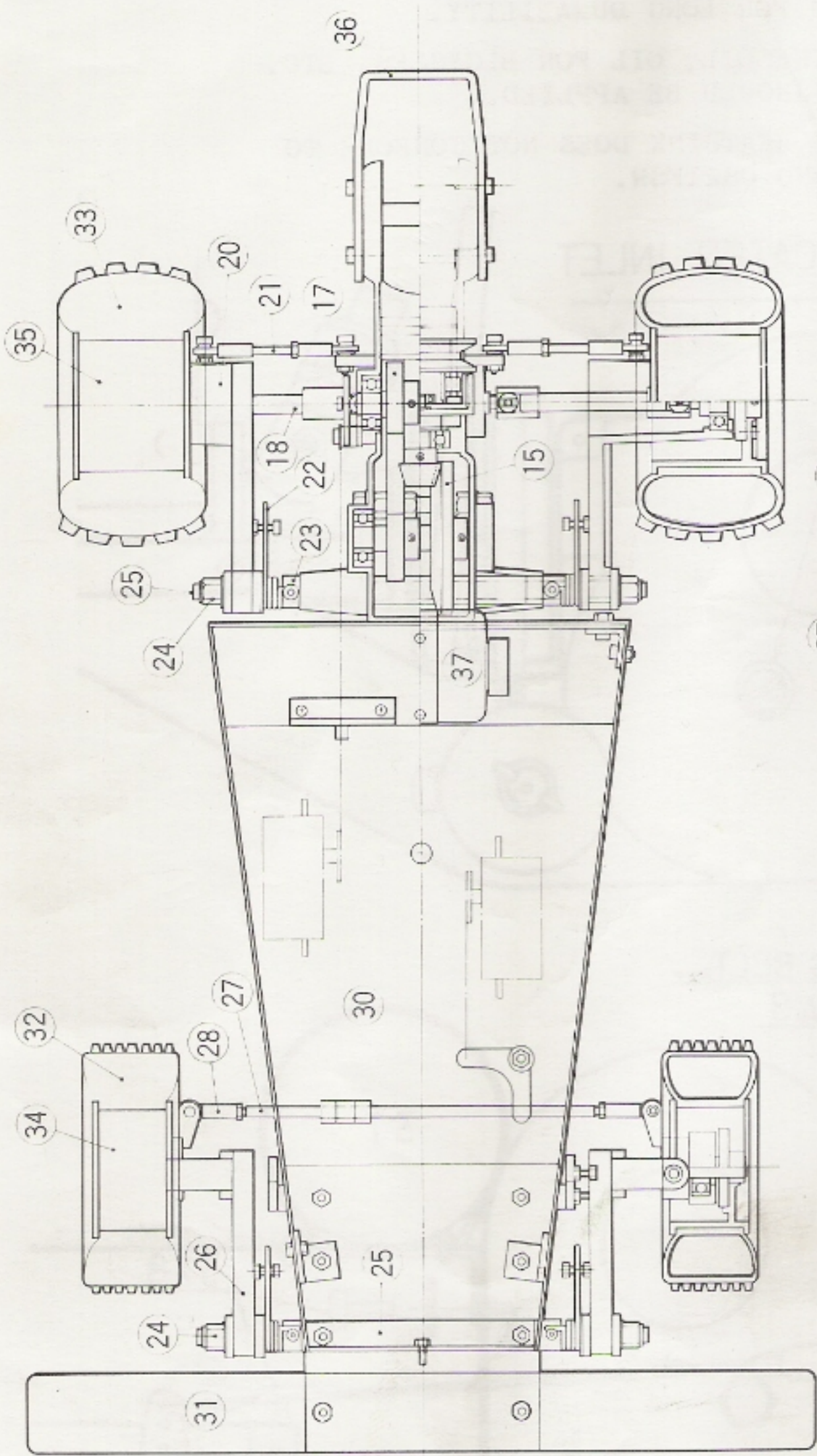
LUBRICATION

CLEAN THE INSIDE OF GEAR BOX OUT OF LUBRICATED INLET WITH THINNER, ALCOHOL, ETC. PER EVERY SEVERAL TRAVELS AND BEFORE TRAVELLING FOR LONG DURABILITY.

FOR LUBRICATION MACHINE OIL, OIL FOR BICYCLES, ETC. (RANGING 5 TO 10 CC) SHOULD BE APPLIED.

NOTE: AUXILIARY HEATSINK DOES NOT CONFORM TO ENYA19X AND OS21FSR.





A handwritten signature or mark in blue ink, located at the bottom right of the page.